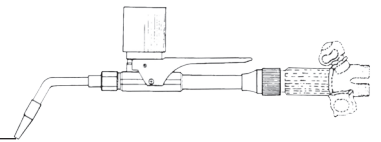




POWDER TORCH

THE STANDARD OF THE INDUSTRY

Made in the USA since 1961



	PRICE
<p>MW MODEL 10 POWDER TORCH Industrial & Agricultural Outfit Complete outfit with mixer and Harris V-100 handle. Includes one size #20, One size #40 and One size #40 Multiflame Powder Injector Tips - One lb. MW #21 for Cast Iron repair - One lb. MW #41 for Shaft overlay - One lb. MW #61 for general Hard Surfacing and One lb. MW #88 containing Carbide Particles for the ultimate in abrasion resistance. Packaged in hard storage case. Shipping Wt. 10 lbs.</p>	\$875.45
<p>MW MODEL 10 POWDER TORCH Engine Rebuilders Special Complete outfit with mixer and Harris V-100 handle. Package Includes Three Powder Injector Tip Assemblies Sizes #15 - #20 & #40 Single Orifice. Also, One lb. of MW #21 Powder for Cast Iron Repair - One lb. MW #41 for Shaft overlay. Shipping Wt. 6 lbs.</p>	\$781.50
<p>MW MODEL 10 POWDER TORCH The Cast Iron Repair Std. Pkg. Complete outfit with mixer and Harris V-100 handle. Package Includes One size MW #20 Powder Injector Tip Assembly and one lb. MW #21 Powder for Cast Iron Repair. Shipping Wt. 4 lbs.</p>	\$649.95
<p>MW MODEL 10 ATTACHMENT ONLY - Use your own V-100 Series Handle Attachment Only With One Size #20 Powder Injector Tip and One lb. #21 Cast Iron Repair Powder. Attachment Includes Factory installed Mixer to Permit Direct Use with any V-100 Series Welding Torch Handle Supplied by Purchaser. Note: Attachments Are Not Available for other Torch Handles. Shipping Wt. 3 lbs.</p>	\$499.95

MW PREMIUM FLAMESPRAY POWDERS

<p>MW #21 CAST IRON REPAIR An integrally fluxed Nickel alloy formulated for automotive, marine, and industrial grade castings. Deposits exceed typical cast iron strength by 20% and are fully machinable. Easy to work with. Closely matches cast color. Applications: Manifolds, Blocks, Heads, Lathe Beds, Molds and Agricultural Irrigation Valves. RC 15-20.</p>	\$56.85 lb.
<p>MW #41 Shaft Overlay A medium hard Nickel/Chrome alloy recommended for crankshaft divot and oil seal area repairs. Excellent heat and corrosion resistance. Good impact resistance. Also use for keyway repair. Deposits are tough but machinable. Applications: Armature Shafts, Piston Heads, Dies, Keyways, Pump and Prop Shafts. RC 38-42.</p>	\$56.85 lb.
<p>MW #51 For CV-Joints and Cam Lobes Relatively hard Nickel/Ferrous/Chrome alloy developed for C-V Housings and Races. Dense porosity free. Produces high luster deposits with low coefficient of friction. Also popular for Cam Lobe rebuilding. RC 50-52.</p>	\$56.85 lb.
<p>MW #61 Universal Hardsurfacing A hard Nickel/Chrome alloy for universal industrial use. An excellent general purpose hardsurfacing material. Can be applied to cast, stainless and high carbon steels. Non-galling and non-sparking. Outstanding resistance to abrasion, corrosion and high temperatures. Any metal-to-metal wear application. Low coefficient friction. The most universal hard surfacing material available. RC 58-62.</p>	\$56.85 lb.
<p>MW #88 Carbide Particle Hard Face Contains 50% Tungsten Carbide particles mixed with MW #61 for the ultimate in abrasion resistance. Non-sparking. Non-galling. Erosion and cavitation resistant. #1 Choice for Tillage Tool Longevity. Use on cast iron, stainless and carbon steels. Normally used as deposited. If grinding is required use a diamond wheel. Applications: Agricultural Disks, Knives, Points, and Sweeps. Combine threshing components and ground engaging machinery. RC 88.</p>	\$66.45 lb.

MW POWDER - QUANTITY PRICES:

Packaged in 1 & 5 lb. containers.

2017 Pricing

1 lb.	\$56.85	per lb.
5 lb.	\$54.80	per lb.
10 lb.	\$53.45	per lb.
30 lb.	\$51.50	per lb.

NOTE:

Price subject to change without notice.
 Call for current pricing.

MW #88 \$66.45 per lb. Any quantity

MAINTENANCE WELDING ALLOYS, LLC

23121 La Cadena Dr. • Unit "E" • Laguna Hills, CA 92653 • (949) 770-7027 • FAX (949) 380-9679
www.mwalloys.com email: mwalloys@gmail.com

**SINGLE ORIFICE Powder Injector
Tip Assembly**

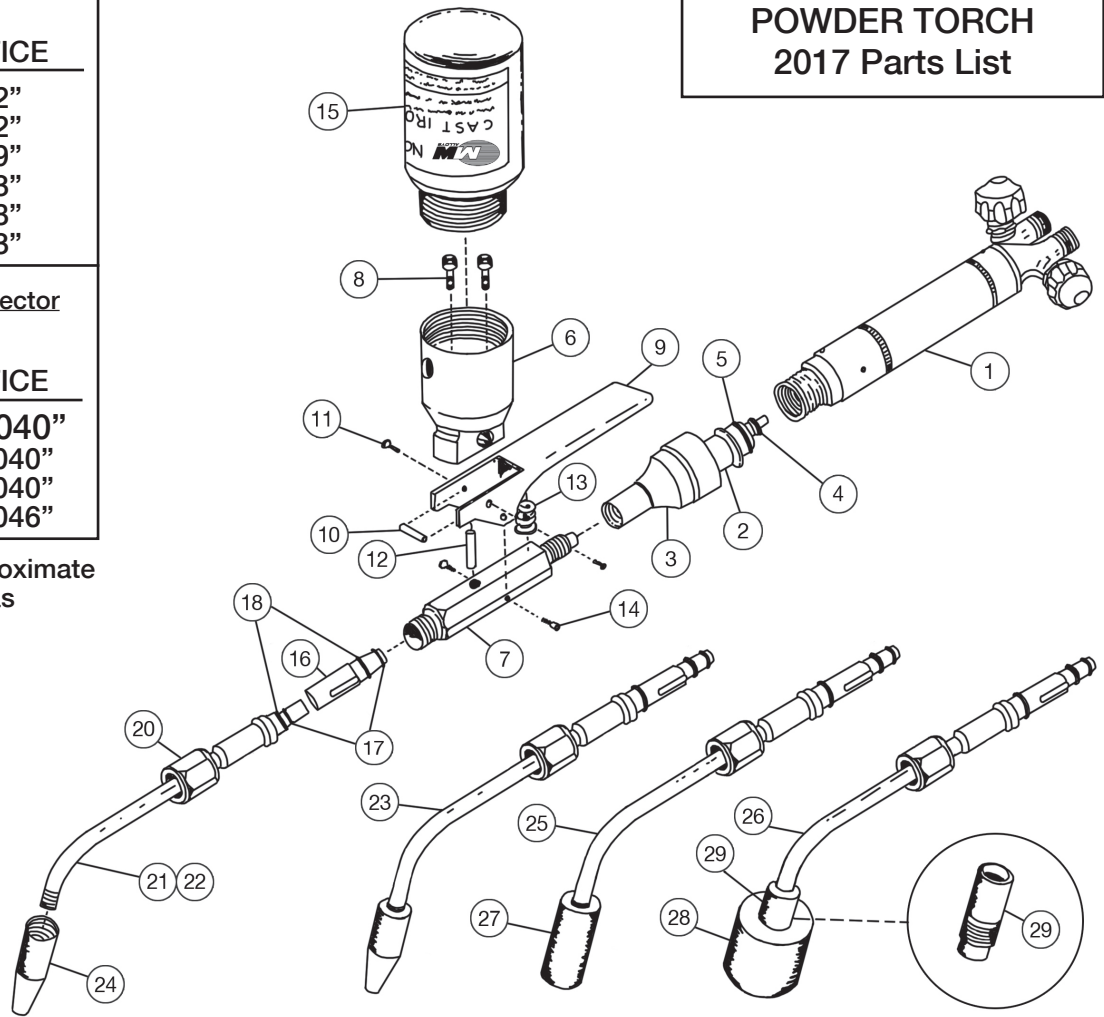
TIP NUMBER	ORIFICE
#6	.042"
#9	.052"
#15	.059"
#20	.073"
#40	.098"
#55	.113"

**MW MODEL 10
POWDER TORCH
2017 Parts List**

**MULTIFLAME Powder Injector
Tip Assembly**

TIP NUMBER	ORIFICE
#20	3 - .040"
#40	7 - .040"
#55	9 - .040"
#90	9 - .046"

Tip Numbers indicate approximate flow in cu ft. per hour of gas



PART NUMBER	NAME	PRICE	PART NUMBER	NAME	PRICE
1	Torch Handle W/Mixer	241.00	20	Tip Coupling Nut	3.75
2	Torch Handle W/OUT Mixer	193.00	21	6" Tip Barrel (6-9-15-20 Tips)	14.55
3	Mixer Only	48.00	22	8" Tip Barrel (For #40 & #55 Tips)	16.30
4	Small "O" Ring - Mixer	.75	23	Complete Tip Assembly (Specify Size) (For all Single Orifice Tips)	68.00
5	Large "O" Ring - Mixer	.75	24	Tip End (Copper) only (Specify Size) (For all Single Orifice Tips)	17.40
6	Powder Hopper Assembly	158.00	25	Complete Tip Assembly #20 Multiflame (3 - .040 Orifices)	74.51
7	Model 10 Hex Body	144.15	26-40	Complete Tip Assembly #40 Multiflame (7 - .040 Orifices)	83.90
8	Hopper Cap Screw	.50	26-55	Complete Tip Assembly #55 Multiflame (9 - .040 Orifices)	88.10
9	Powder Feed Lever	22.00	26-90	Complete Tip Assembly #90 Multiflame (9 - .046 Orifices)	88.10
10	Valve Bar	6.60	27	#20-Multiflame Tip End Only	27.25
11	Valve Bar Screw	.50	28-40	#40-Multiflame Tip End Only	45.85
12	Powder Feed Valve (Rubber)	7.50	28-55	#55-Multiflame Tip End Only	49.65
13	Spring	3.00	28-90	#90-Multiflame Tip End Only	49.65
14	Pivot Pin	2.25	29	Adapter for #40 or #55 Multiflame Tip Ends	17.25
15	Powder Bottle	2.50			
16	Injector Sub Assembly (Specify Size)	35.80			
17	"O" Ring - Powder Injector	.75			
18	"O" Ring - Powder Injector	.75			
19	Rebuild Kit Model 10	10.00			

MAINTENANCE WELDING ALLOYS, LLC

23121 La Cadena Dr. • Unit "E" • Laguna Hills, CA 92653 • (949) 770-7027 • FAX (949) 380-9679
www.mwalloys.com email: mwalloys@gmail.com